



# IQeye 3 Series™

IQ030S, IQ031S, and IQ032S

Quick Install Guide



## Getting Started

1. Plug the IQeye camera into the network.
2. The IQeye 030S, 031S, and 032S cameras are powered via the Ethernet using an IEEE 802.3af power source.

**NOTE:** The IQeye 03 Series camera can only be powered with a standard IEEE 802.3af PoE injector or PoE switch. It CANNOT BE POWERED with DC or AC power sources.

3. The IQeye 03 series camera field of view and focus adjustment must be performed using a browser to view the camera image.



**IQeye 03 Series Camera**

## PC Configuration of IQeye Cameras

**PLEASE NOTE** - The default user name for all IQeye devices is "root" and the default password is "system".

IQeye cameras are configured for DHCP and will have an IP address assigned if a DHCP server is on the network. If a DHCP server is not available, the camera IP address will need to be configured using either IQfinder or IQmanager depending on the number of cameras being installed.

1. Insert the IQtools CD in the CD drive of the PC. The IQfinder installation application will launch automatically.

2. Click “Scan for IQeye cameras on my network” to find IQeye cameras (Figure 1).



Figure 1

The detected cameras will be displayed in the IQfinder window (Figure 2). Highlight a camera from the list and click the “Assign IP” button to edit the selected camera’s IP settings.

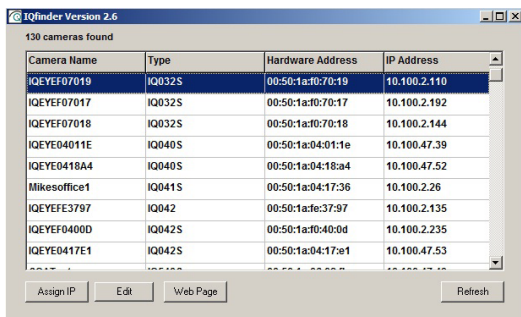


Figure 2

3. The “Assign IP” window allows the IP Address, Subnet, and Gateway of the camera to be changed. It also allows the camera to be configured to DHCP. Click the “Apply” button after making the desired changes (Figure 3).

**NOTE:** Changing between a static IP address and DHCP will cause the camera to reboot.

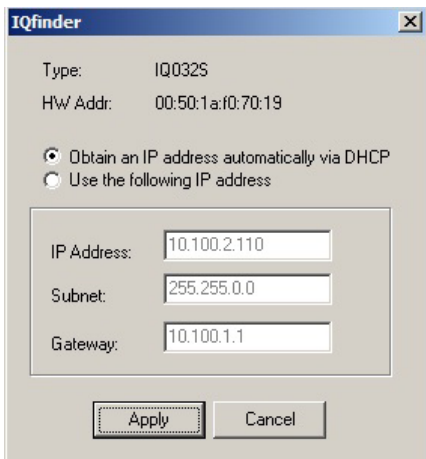


Figure 3

4. To view a camera, double click a camera entry or highlight a camera in the list and click the “Web Page” button (Figure 4).

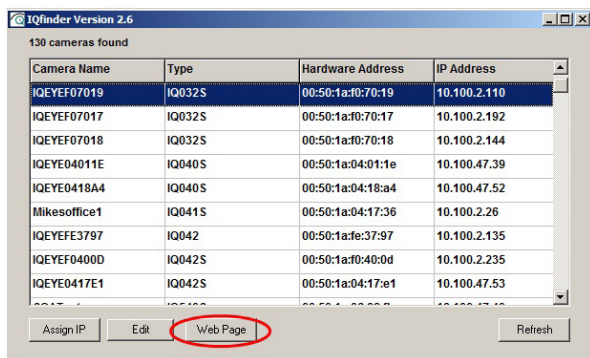


Figure 4

5. The “Live” page will be displayed through the default browser (IE recommended). It is also possible to open Internet Explorer and enter the IP address of the IQeye camera in the address field of the browser. If prompted, install the Active X control (Figure 5).

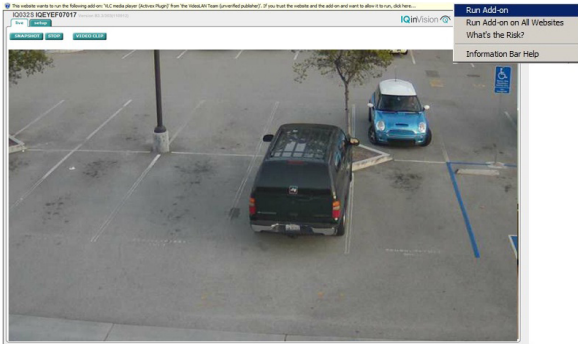


Figure 5

6. To perform further configuration of the camera click on the “Setup” tab.

**NOTE:** The default username is ‘root’ and the default password is “system”.

7. To prepare the camera to serve the H.264 stream, select H.264 from the video drop-down (Figure 6). To view the H.264 stream full screen (without “Live” page controls), double click on the video area. Double click on the video image again to return back to the “Live” page.

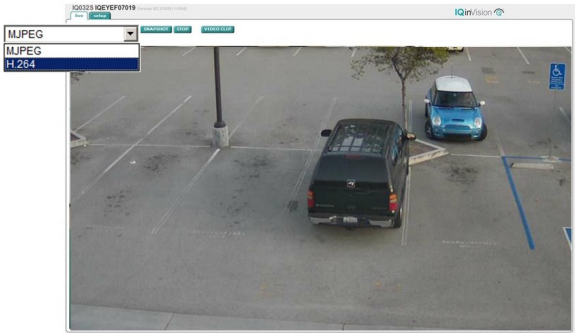


Figure 6

For additional information and technical documents, please visit [www.iqeye.com/support/manuals.html](http://www.iqeye.com/support/manuals.html)

