



IQeye Alliance-pro Series

Vandal-resistant IP Camera

Installation and Operating Instructions



Important Safeguards



Due to product size and space limitations, this label may not appear on all products.



The lightning flash with an arrowhead symbol within an equilateral triangle is intended to alert the user to the presence of uninsulated "dangerous voltage" within the product's enclosure that may be of sufficient magnitude to constitute a risk of electric shock to persons.



The exclamation point within an equilateral triangle is intended to alert the user to presence of important operating and maintenance (servicing) instructions in the literature accompanying the appliance.

**WARNING: TO PREVENT FIRE OR SHOCK HAZARD,
DO NOT EXPOSE UNITS TO RAIN OR MOISTURE.**



Attention: Installation should be performed by qualified service personnel only in accordance with the National Electrical Code or applicable local codes.

Contents

- 1 Unpacking
- 2 Service
- 3 Description
- 4 Installation
- 5 Parts List
- 6 Mounting Options
- 7 Removal of Dome Cover and Camera Assembly
- 8 Install Interior Mounting Plate
- 9 Connect Camera
- 10 Camera Positioning, Field-of-View Set-up and Focus
- 11 Reboot and Factory Restore
- 12 Close Camera
- 13 PC Connection of Alliance-pro
- 14 Warranty

1 Unpacking

Unpack carefully. This is an electromechanical device and should be handled with care. Check to ensure the following are included:

IQA3xNI Series Alliance Dome

- › Alliance Dome Camera Assembly
- › Torx T-20 Security Wrench
- › Mounting Template
- › Mounting Hardware
- › IQtools CD-ROM

IQA3xNE and IQA3xNX Series Alliance Dome

- › Alliance Dome Camera Assembly and Back Box
- › ¾" NPT Plug
- › Torx T-20 Security Wrench
- › Weather Gasket
- › Dome Camera Tether Assembly
- › Mounting Hardware
- › Mounting Template
- › IQtools CD-ROM

2 Service

If the unit needs repair service or parts, the customer should contact IQinVision for authorization to return, as well as shipping instructions.

IQinVision

33122 Valle Road

San Juan Capistrano, CA 92675-4853

Phone: +1-949-369-8100 or 1-877-850-0805 (toll-free in U.S.)

Fax: +1-949-369-8105

3 Description

IQeye Alliance-pro Series is an advanced network dome camera available in multiple resolutions from VGA to multi-megapixel. With a variety of models to choose from, the IQeye Alliance-pro is ideal for applications requiring true day/night functionality or H.264 compression for lower file sizes, while still delivering high-quality images at megapixel resolutions. In addition, the Extreme Temperature models can withstand the harshest weather conditions.

The Alliance-pro's unique auto tracking shroud automatically aligns during setup and installation of the camera. Its innovative low profile design gives a flush-mount appearance, although Alliance-pro is actually a surface mount camera. Alliance-pro's mounting plate or back box provides for a stable, robust installation, and the integrated 3-axis gimbal allows for mounting Alliance-pro anywhere and still achieving high-quality images.

4 Installation

NOTE: This manual describes how to install the IQeye Alliance-pro Series camera system and details interior wall and ceiling mounting options. For exterior mounting options, consult the additional manual included with those units. Installation should be performed by qualified service personnel only in accordance with local, state and national code(s).

5 Parts List

Figure 5.1 and Figure 5.2 depict the major camera assembly parts included:

IQA3xNI Series

- a. Alliance Mounting Plate
- b. Alliance Camera, Lens
- c. Alliance Shroud
- d. Alliance Dome Cover Assembly

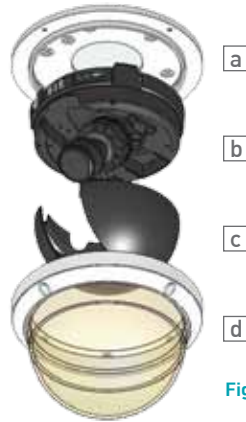


Figure5.1

IQA3xNE and IQA3xNX Series

- a. Alliance Exterior Back Box
- b. Alliance Camera and Lens Assembly
- c. Alliance Shroud
- d. Alliance Dome Cover Assembly

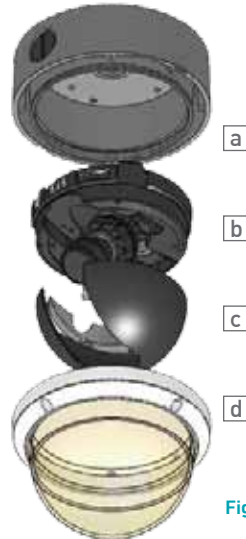


Figure 5.2

6 Mounting options

Alliance-pro cameras can be mounted in one of two configurations, wall or ceiling. Both mounting configurations are shown in Figure 6.1 and Figure 6.2.



Figure 6.1



Figure 6.2

In the wall mount configuration, use the 3-axis gimbal to level the field of view for any camera position.

7 Removal of Dome Cover and Camera Assembly

- a. Using the supplied Torx T-20 security tool, loosen the four tamper-proof screws holding the dome cover to the enclosure assembly. Note these screws are captive. These screws should not be removed from the dome cover trim ring.
- b. Lift the dome cover and trim ring away from the camera assembly.
- c. Locate the removal tabs where the camera assembly connects to the mounting plate as shown in Figure 7.1.



- d. Press any two of the three removal tabs and pivot the camera assembly up and away from the mounting plate.

8 Install Interior Mounting Plate

- a. Position the supplied mounting template on the surface in the location where the camera will be installed. Trace and drill the mounting holes and the cable pass through hole, as indicated.
- b. Using the supplied or equivalent hardware, install the mounting plate to the intended surface.
- c. Pull cabling through the pass-through hole.

NOTE: When installing the Alliance-pro to a ceiling tile, use hardware designed to secure the camera assembly to such a surface and ensure the ceiling tile being mounted is secure.

In addition, follow local regulations and laws which may have specific requirements governing the installation of security equipment on a ceiling tile surface. IQinVision strongly recommends the use of a ceiling tile brace and other mounting hardware designed to secure the Alliance-pro to the ceiling frame infrastructure.

9 Connect Camera

Power-over-Ethernet, Direct Power, and I/O connections are made on the top of the camera module. See Figure 9.1.



Figure 9.1

a. Power the camera using either direct power or Power-over-Ethernet.

1. Direct Power: Connect either a 12-24VDC or 24VAC power source to the camera. Wire polarity is not important, therefore + or – connections can be connected to either terminal as shown in Figure 9.2.



Figure 9.2

NOTE: Using a power source with specifications other than those defined will damage the camera, and will void the product warranty.

2. Power-over-Ethernet: Input from an IEEE802.3af Power-over-Ethernet (PoE) injector or switch.

b. Route and connect the Ethernet cable to the Ethernet port on the camera as shown in Figure 9.3.



Figure 9.3

- c. If Audio and I/O connections are being used, attach them to the appropriate terminals on the Audio / Triggers terminal block on the camera as shown in Figure 9.4.



Figure 9.4

- d. Carefully feed the connected wires one at a time back through the pass through hole.
- e. Snap the camera assembly into the mounting ring by sliding one of the removal tabs under the lip of the mounting ring and firmly pivoting the other two mounting tabs into the mounting plate. The camera mounting tabs should snap into place.

10 Camera Positioning, Field-of-View Set-up and Focus

NOTE: Camera positioning, field-of-view and focus set-up can be assisted by connecting an analog test monitor to the installation / set-up RCA port on the side of the camera.

- a. Determine camera pan direction by gripping the camera assembly near the mounting plate. Carefully pivot the camera to the correct pan position.
- b. Open the camera shroud by flipping it down and away from the front of the camera. The front of the camera is indicated by the lens location.

- c. Adjust the tilt of the camera by loosening the tilt angle lock screw as shown in Figure 10.1 and position the lens to the desired position. When finished, lock down the camera tilt angle by tightening the tilt lock screw.



Figure 10.1

- d. Adjust the field-of-view and focus rings to focus the lens. Be sure to lock the lens ring thumbscrews when desired focus is achieved.
- e. The Alliance-pro is equipped with an analog video port, RCA type, which can be found next to the reset / reboot buttons. This analog port utilizes IQinVision's exclusive IQfocus utility which allows precise focusing of the camera. Note that IQfocus shuts off 30 minutes after the Alliance-pro is powered up or immediately after sending a digital stream.

NOTE: The lens on the Alliance-pro cameras are fixed iris and therefore no iris adjustment is required.

11 Reboot and Factory Restore

- a. Rebooting - Depress the reboot key for 2-3 seconds then release.
- b. Restoring to Factory Default - Press the "Factory" button for 2-3 seconds then release.



Figure 11.1

12 Close Camera

- a. Once the field-of-view and focus have been verified, make sure all adjustment screws and locks are firmly tightened.
- b. Remove the analog test monitor RCA connection (if used).
- c. Close the shroud by pivoting it back against the camera, while being careful not to disturb the lens.
- d. Position the dome cover so that the screws line up with the matching receiving holes on the mounting plate.
- e. Tighten the dome cover screws to the mounting plate with the supplied Torx T-20 tool.

13 PC Configuration of IQeye Alliance-pro

PLEASE NOTE - The default user name for all IQeye devices is “root” and the default password is “system”.

IQeye cameras are configured for DHCP and will have an IP address assigned if a DHCP server is on the network. If a DHCP server is not available, the camera IP address will need to be configured using either IQfinder or IQmanager depending on the number of cameras being installed.

- a. Insert the IQtools CD in the CD drive of the PC. The IQfinder installation application will launch automatically.
- b. Click “Scan for IQeye cameras on my network” to find IQeye cameras (Figure 13.1). The detected cameras will be displayed in the IQfinder window. Highlight a camera from the list and click the “Assign IP” button to edit the selected camera’s IP settings.



Figure 13.1

- c. The “Assign IP” window allows the IP Address, Subnet, and Gateway of the camera to be changed. It also allows the camera to be configured to DHCP. Click the “Apply” button after making the desired changes (Figure 13.2).

NOTE: Changing between a static IP address and DHCP will cause the camera to reboot.



Figure 13.2

- d. To view a camera, double click a camera entry or highlight a camera in the list and click the “Web Page” button (Figure 13.3).

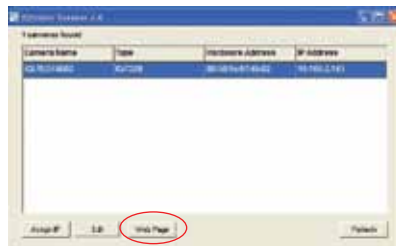


Figure 13.3

The “Live” page will be displayed through the default browser (IE recommended). It is also possible to open Internet Explorer and enter the IP address of the IQeye camera in the address field of the browser. If prompted, install the Active X control (Figure 13.4).



Figure 13.4

e. To perform further configuration of the camera click on the “Setup” tab.

NOTE: The default username is “root” and the default password is “system”.

f. To prepare the camera to serve the H.264 stream, select H.264 from the video drop-down (Figure 13.5). To view the H.264 stream full screen (without “Live” page controls), double click on the video area. Double click on the video image again to return back to the “Live” page.



Figure 13.5

For additional information and technical documents, please visit www.iqeye.com/faq

14 IQinVision 3/5 Year Limited Hardware Warranty

Warranty Coverage

IQinVision, Inc. (“IQinVision”) warranty obligations are limited to the terms set forth below:

IQinVision warrants the original purchaser that the IQINVISION Network Video product enclosed with this limited hardware warranty will in respect of the hardware be free from defects in design, workmanship and materials under normal use. The warranty period for all cameras purchased before 1/1/2011 is two (2) years. The warranty period for “Alliance-mini” cameras (IQDxxx) purchased after 1/1/2011 is five (5) years. All other cameras purchased after 1/1/2011 include a three (3) year warranty period from the date of the original end-user purchase (“Warranty Period”).

The original purchaser shall without undue delay notify IQinVision of any defect which appears according to IQinVision’s RMA Handling procedure, failure to which shall mean that the purchaser loses its right to have the defect remedied. A valid form of a bill of sale or receipt from an authorized retailer/distributor with the date of the original purchase must be presented to obtain warranty service. If a valid claim is received within the Warranty Period, the sole remedy of the original purchaser and IQinVision’s sole and exclusive liability shall be limited to, at IQinVision’s sole discretion, IQinVision will repair or replace defective parts of the IQeye camera with new parts, or with serviceable used parts that are superior or equivalent in performance to new parts, without charge. Repaired or replacement hardware will be warranted for the remainder of the original Warranty Period or ninety (90) days, whichever is longer. When a product or part is exchanged the replacement hardware becomes the property of the original purchaser and all hardware or part thereof that is replaced shall become the property of IQinVision.

This Limited Warranty is applicable in all countries and may be enforced by contacting IQinVision support worldwide, for more information please visit our web site www.iqeye.com

Exclusions and Limitations

This warranty does not apply (a) to faulty and improper installation, maintenance, service, repair and/or alteration in any way that is not contemplated in the documentation for the product or carried out with IQinVision’s consent in writing, operational adjustments covered in the operating manual for the product or normal maintenance, (b) to cosmetic damages, (c) if the product is modified or tampered with, (d) if the product is damaged by acts of God, misuse, abuse, negligence, accident, normal wear and tear and deterioration, improper environmental conditions (including, but not limited to, electrical surges, water damage, chemical exposure, and/or heat/cold exposure) or lack of responsible care, (e) if the product has had the model or serial number altered, defaced or removed, (f) to consumables (such as storage media or batteries) (g) to products that have been purchased “as is” and IQinVision, the seller or the liquidator expressly disclaim their warranty obligation pertaining to the product, (h) to any non-IQinVision hardware product or any software (irrespective of packaged or sold with an IQinVision hardware product) and IQinVision products purchased from an unauthorized distributor/reseller, (i) to damage that occurs in shipment or (j) to damages by any other causes not related to defective design, workmanship and/or materials.

All Inquiries for RMA and Warranty Repair should be directed to support@iqeye.com or to the following:

IQinVision
33122 Valle Road
San Juan Capistrano, CA 92675-4853 USA
Phone: +1-949-369-8100 or 1-877-850-0805 (toll-free in U.S.)
Fax: +1-949-369-8105

NOTE:

- > If the product is to be used outdoors or in dusty, humid, or other hostile environments, it must be suitably protected.
- > Further, camera products specifically, must be protected, whether in use or not, from exposure to direct sunlight or halogen light – which may damage the camera image sensor. This applies to both indoor and outdoor use of the cameras.
- > For camera products supplied without a lens, extreme care should be used when mounting a lens on these products. Damage to the product due to incorrectly mounted lenses will invalidate this limited hardware warranty.
- > Failure to comply with any of the aforementioned requirements will invalidate this Limited Hardware Warranty.

THE WARRANTY AND REMEDIES PROVIDED ABOVE ARE EXCLUSIVE AND IN LIEU OF ALL OTHER EXPRESS OR IMPLIED WARRANTIES INCLUDING, BUT NOT LIMITED TO, THE IMPLIED WARRANTIES OF MERCHANTABILITY OR FITNESS FOR A PARTICULAR PURPOSE. CERTAIN JURISDICTIONS DO NOT ALLOW THE EXCLUSION OF IMPLIED WARRANTIES. IF LAWS UNDER SUCH JURISDICTIONS APPLY, THEN ALL EXPRESS AND IMPLIED WARRANTIES ARE LIMITED TO THE WARRANTY PERIOD IDENTIFIED ABOVE. UNLESS PROVIDED HEREIN, ANY STATEMENTS OR REPRESENTATIONS MADE BY ANY OTHER PERSON OR FIRM ARE VOID. EXCEPT AS PROVIDED IN THIS WRITTEN WARRANTY AND TO THE EXTENT PERMITTED BY LAW, NEITHER IQINVISION NOR ANY AFFILIATES SHALL BE LIABLE FOR ANY LOSS, (INCLUDING LOSS OF DATA AND INFORMATION), INCONVENIENCE, OR DAMAGE, INCLUDING, BUT NOT LIMITED TO, DIRECT, SPECIAL, INCIDENTAL OR CONSEQUENTIAL DAMAGES, RESULTING FROM THE USE OR INABILITY TO USE THE IQINVISION PRODUCT, WHETHER RESULTING FROM BREACH OF WARRANTY OR ANY OTHER LEGAL THEORY. NOTWITHSTANDING THE FOREGOING, IQINVISION’ TOTAL LIABILITY FOR ALL CLAIMS UNDER THIS WARRANTY SHALL NOT EXCEED THE PRICE PAID FOR THE PRODUCT. THESE LIMITATIONS ON POTENTIAL LIABILITIES HAVE BEEN AN ESSENTIAL CONDITION IN SETTING THE PRODUCT.

