

IQaccess

INSTALL/UPDATE

To utilize IQaccess, first install/update the following IQaccess features:

License - The license file must be purchased through an IQeye representative or a demo license can be obtained by contacting technical support at support@iqeye.com. The license will load onto the camera via the license upload section under the "Security" tab.

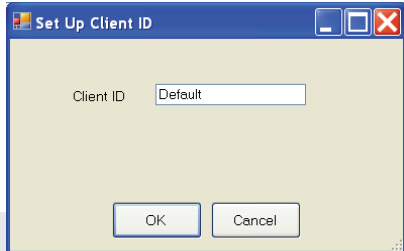
IQaccess Program - Available as a setup.exe file that installs the IQaccess interface. This must be installed on every workstation using the IQaccess feature. Download the program from the www.iqeye.com website for free.

Firmware - Ensure the latest firmware that supports IQaccess is installed on the camera. Request the latest firmware from support@iqeye.com or by downloading it from the iqeye.com website.

STARTING IQaccess

IQaccess can be found at:

"Start/All Programs/IQinVision/IQaccess/IQaccess"



Upon boot-up, the Client ID box appears. Enter either a user name or a description of the computer running IQaccess. This will identify connected clients which may be important if multiple users are configured.

REGISTERING CAMERAS

Every camera using IQaccess must be registered. Highlight the camera to view using IQaccess and click the "Connect" button.

Enter the Password (default is **doorbell**). Choose either the "24/7" (User is connected full time to the camera) or "Scheduled Hour Client" (User has scheduled access rights which is specified under the IQaccess tab on the camera).

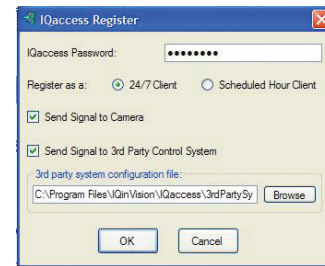
Indicate where to send the control signal when the "Door Release" button is pressed.

Select "Send signal to camera" to have the camera momentarily active the output trigger on the IQeye camera when the door release button is pressed on the live video pop-up.

Select "Send signal to 3rd party control system" to send a control message to a 3rd party system when the door release button is pressed on the live video pop-up. When the door release button is pressed a message based on the protocol defined in the user supplied XML configuration file will be sent to the 3rd party system.

NOTE: IQaccess places an example XML configuration file in the installation directory.


Click OK.

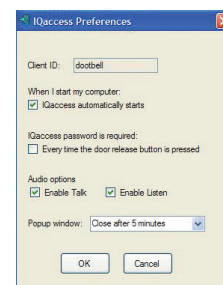


On the IQaccess screen, the camera needs to be marked as connected.

Camera Name	Type	Hardware Address	IQaccess	IP Address
IQEYE020260	Shibby	00:50:1A:02:02:60	Not Register...	10.120...
IQaccess	IQA21S	00:50:1A:02:35:CC	Connected	10.120...

PREFERENCES

Open IQaccess Preferences by right-clicking on the door icon  near the clock on the taskbar, then left-click on "Preferences". The following options are available:



When I start my computer: IQaccess automatically starts - Allows IQaccess to start every time the computer is powered on.

IQaccess password is required: Every time the door release button is pressed - Requires the Password to be entered whenever the Door Release button is pressed.

Quick Install Guide

AUDIO OPTIONS

Enables the user to talk, listen, or to do both when IQaccess is triggered. Requires an external microphone and amplified speaker to be connected to the camera.

Enable Talk - Enables the "Push To Talk" button on the IQaccess video window.

Enable Listen - Allows the user to hear audio from the external microphone connected to the camera.

Pop-up window - Configures how the pop-up window should be closed.

Close after 5 minutes - IQaccess will automatically close a pop-up window after five minutes. This is the default recommended option.

Close Manually - The user will have to manually close the pop-up window.

IQaccess TAB

The IQaccess tab on the camera can be accessed by highlighting the camera in IQaccess and click on the "Web Page" button. Log into the camera via the setup tab and go to the IQaccess tab.

password	••••••••
schedule hours begin	05:00
schedule hours end	24:00
button text	
external input	onclose
trigger	relay input

The following Settings can be adjusted:

Password - Changes the default password of "doorbell". Password must be alphanumeric and up to 32 characters with no spaces and is case sensitive.

Off-hours Start/End - Set the time (in 24 hr format) to specify hours for the "Scheduled Hour Client".

Button Text - Changes the name of the button on the IQaccess window.

External Input - Specify if the input from an attached device will cause IQaccess to open either when the device relay opens or when it closes.

Trigger - This setting allows you to specify what will activate the IQaccess. The options are:

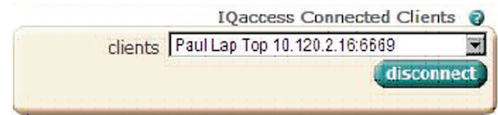
Relay Input - Activates IQaccess based on a Relay Input change.

Motion - IQaccess will be activated when motion is detected.

Both - Relay Input change and Motion event will both activate the IQaccess.

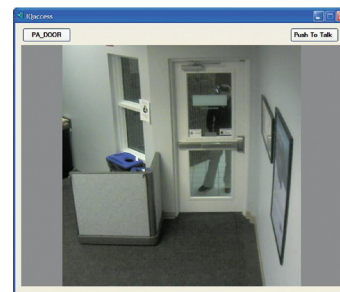
None - IQaccess is disabled.

IQaccess Connected Clients - The "Connected Clients" drop-down box gives a user the ability to see who is connected to the camera and also the ability to disconnect users. To disconnect a user, select their name in the drop-down menu and click "disconnect".



IQaccess

When a motion or relay input occurs, the following window appears on every workstation that is registered to the camera. If the event occurs during the "Scheduled Hour Client" time, both clients and scheduled clients will receive the IQaccess. The "Door Release" button can then be utilized to unlock a door; or whatever function is designated for the button. The "Push To Talk" button can be utilized to talk to whoever activated the IQaccess trigger window.



ADD REMOTE

Remote cameras can be added by clicking on the "Add Remote" button. Specify the Remote IP or Remote Host Name and the HTTP Port assigned to the camera and click the "OK" button.

Add Remote Camera

Remote Host Name:

Remote IP: 66.241.231.122 Port: 5023

OK Cancel

Please Note: TCP Port 32008 needs to be open on the router at the camera location to allow IQaccess to work properly.

DELETE REMOTE

To remove any remote cameras that were manually created, highlight the camera and click on the "Delete Remote" button. This will remove the camera from the interface and will not appear again in any searches.

UNREGISTER CAMERAS

To unregister any camera, highlight the camera and click on the "Unregister" button. This will stop the IQaccess from opening on that particular workstation when a trigger or motion event occurs.



33122 Valle Road
San Juan Capistrano, CA92675-4853 USA
Toll-Free within U.S 877.850.0805
phone + 1.949.369.8100
fax + 1.949.369.8105

www.iqeye.com

300-3302 Rev. C