

## Applies To

- IQeye All

## Summary

This applies to new operating code, boot code, web pages, cron scripts, etc. These instructions assume you are using a PC with Windows.

## Contents

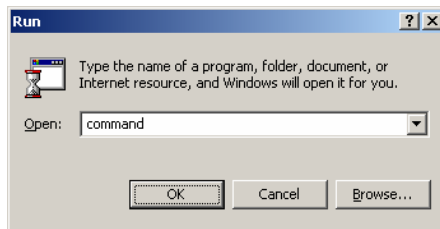
- FTP code to camera
- New IQeye camera operating system (firmware)
- Uploading new camera operating firmware

## Details

### FTP code to camera

1. Start a DOS window.

Start | Run | Command



2. `cd` to the directory into which you placed the file you wish to load into your camera. (`\temp` in the example below).

3. Start an FTP session to the camera. Replace '*IPaddress*' with the camera's actual IP address.

```
C:> FTP IPaddress
```

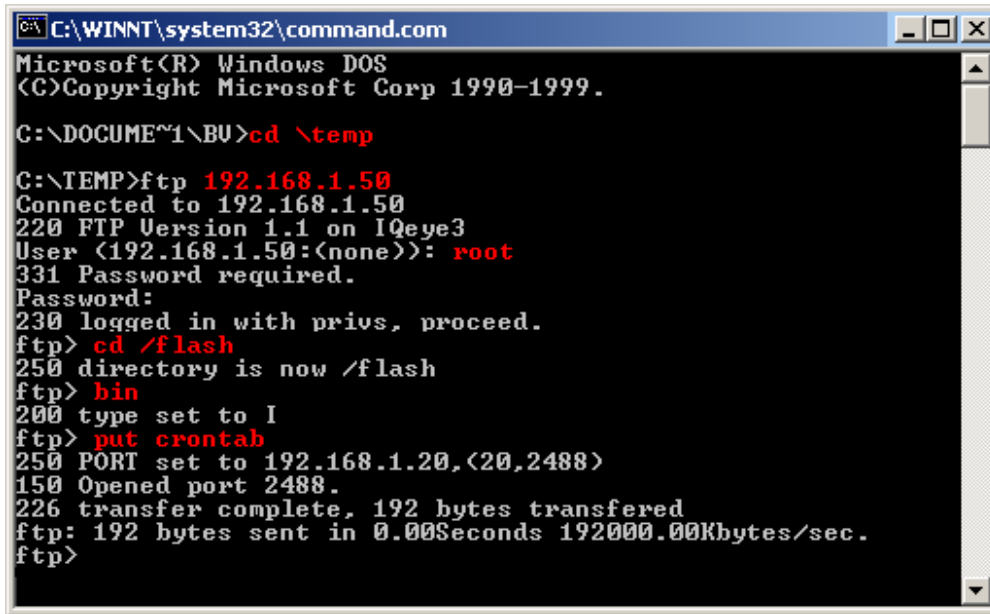
4. Login with the username (`root`) and password (default camera password is `system`). If you changed your camera management password, then use the new password.

```
ftp> cd /flash  
ftp> bin (set transfer to binary mode)
```

5. Send the file from the PC to the camera. Replace *filename* with the name of the file you want to transfer. The filename is case sensitive.

```
ftp> put filename
```

6. Sample screen shot of FTP session. User input is in red.  
The camera password will not be displayed on the screen.



```
C:\WINNT\system32\command.com
Microsoft(R) Windows DOS
(C)Copyright Microsoft Corp 1990-1999.

C:\DOCUME~1\BU>cd \temp

C:\TEMP>ftp 192.168.1.50
Connected to 192.168.1.50
220 FTP Version 1.1 on IQeye3
User (192.168.1.50:(none)): root
331 Password required.
Password:
230 logged in with privs, proceed.
ftp> cd /flash
250 directory is now /flash
ftp> bin
200 type set to I
ftp> put crontab
250 PORT set to 192.168.1.20,(20,2488)
150 Opened port 2488.
226 transfer complete, 192 bytes transferred
ftp: 192 bytes sent in 0.00Seconds 192000.00Kbytes/sec.
ftp>
```

7. Use `quit` to exit the FTP utility.

## New IQeye camera operating system (firmware)

Current IQeye firmware can be found at [www.iqeye.com/spt/software.htm](http://www.iqeye.com/spt/software.htm).

Each camera family has different firmware. Take care that you upload the proper firmware into the appropriate model camera.

## Uploading new camera operating system firmware

1. Determine the camera model you wish to upgrade. The camera model (along with current firmware version) can be found on the camera's *server management* page.
2. Download the corresponding firmware (.sys file extension) onto your PC.
3. Using the FTP directions above, put the proper firmware image into the camera's `/flash` directory.
4. When successfully completed, the camera will automatically re-boot and load the new operating system.

**Note:** The camera will 'fail safe'. It will not attempt to load the new firmware if there is a failed, corrupted or interrupted upload.

## More Information

- IQEYE Reference manual. See <http://www.iqeye.com/spt/manuals.htm>
- TechTip - Use CRON to control FTP times
- TechTip - FTP to a second server every 10 minutes

- TechTip - *Diagnose / setup FTP*